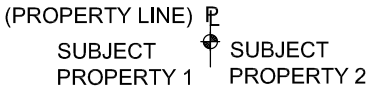


(H) WALL HEIGHT	(A) FOUNDATION DEPTH	(B) FOUNDATION WIDTH	(C) VERTICAL REINFORCING	(D) HORIZONTAL REINFORCING
30"	12"	14"	#3 REBAR @ 24" O.C.	#3 CONTINUOUS AT TOP OF WALL #3 CONTINUOUS AT MIDHEIGHT OF WALL (2)#4 CONTINUOUS AT FOUNDATION
36"	12"	14"	#3 REBAR @ 24" O.C.	#3 CONTINUOUS AT TOP OF WALL #3 CONTINUOUS AT MIDHEIGHT OF WALL (2)#4 CONTINUOUS AT FOUNDATION
48"	12"	20"	#3 REBAR @ 24" O.C.	#4 CONTINUOUS AT TOP OF WALL #3 CONTINUOUS AT MIDHEIGHT OF WALL (2)#4 CONTINUOUS AT FOUNDATION
60"	12"	24"	#4 REBAR @ 32" O.C.	#4 CONTINUOUS AT TOP OF WALL #4 CONTINUOUS AT MIDHEIGHT OF WALL (2)#4 CONTINUOUS AT FOUNDATION
72"	12"	27"	#4 REBAR @ 24" O.C.	#4 CONTINUOUS AT TOP OF WALL #4 CONTINUOUS AT MIDHEIGHT OF WALL (3)#4 CONTINUOUS AT FOUNDATION

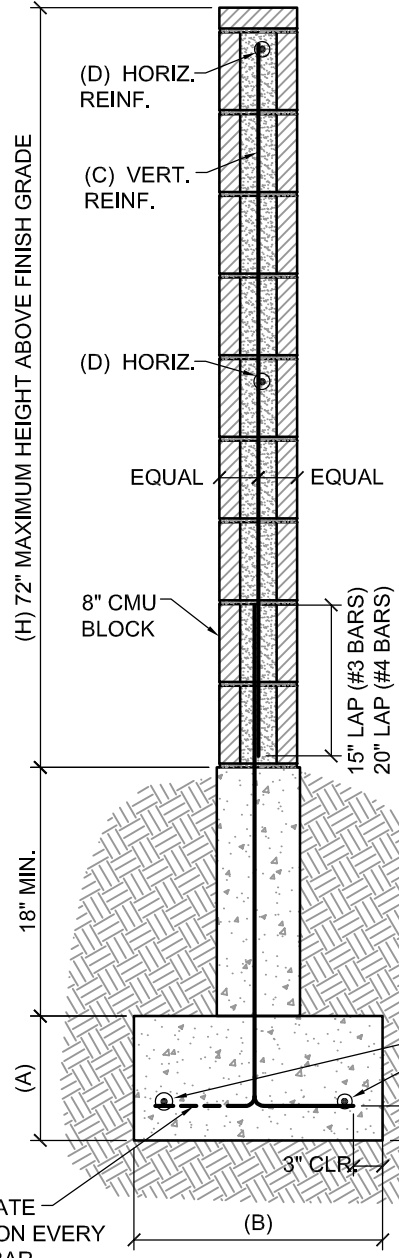


**SPECIFICATIONS:**

- MASONRY BLOCK: Conforming to ASTM C90.
- CONCRETE: 2,500 p.s.i. compressive strength after 28 days of curing.
- REINFORCING: Deformed bars, conforming to ASTM A615 Grade 60.
- GROUT: Conforming to ASTM C476 w/ minimum compressive strength of 2,000 p.s.i.
- ANCHORS & TIES: Coppercoated or zinc-coated steel.

**NOTES:**

- Foundation must be poured against undisturbed soil.
- All cells containing reinforcing steel shall be solid grouted.
- Foundations shall not extend above finish grade.
- Provide alternate bends in vertical reinforcing.
- Horizontal joints shall be level, vertical joints plumb and faces of masonry flush.
- Neatly strike and clean off all joints in the face of walls which are not to be plastered.
- Chipped, warped or otherwise defective masonry units shall not be used in finish work.
- Provide "cleanouts" for grout pours > 48" high.
- For the repair/replacement of an existing wall, the block and cap shall match the material finish and color of the existing block.



**BLOCK WALL DETAIL**

N.T.S.

**NOTE:**

Prior to Installation it is recommended that a Design Professional review the proposed structure regarding Design Standards Applicable to Site Specific Conditions.